

CERTIFICATE OF LOCATION OF GOVERNMENT CORNER

NORTHEAST Corner of Section 21, Township 106, Range 39, 5TH P.M.

STATE OF MINNESOTA, County of MURRAY

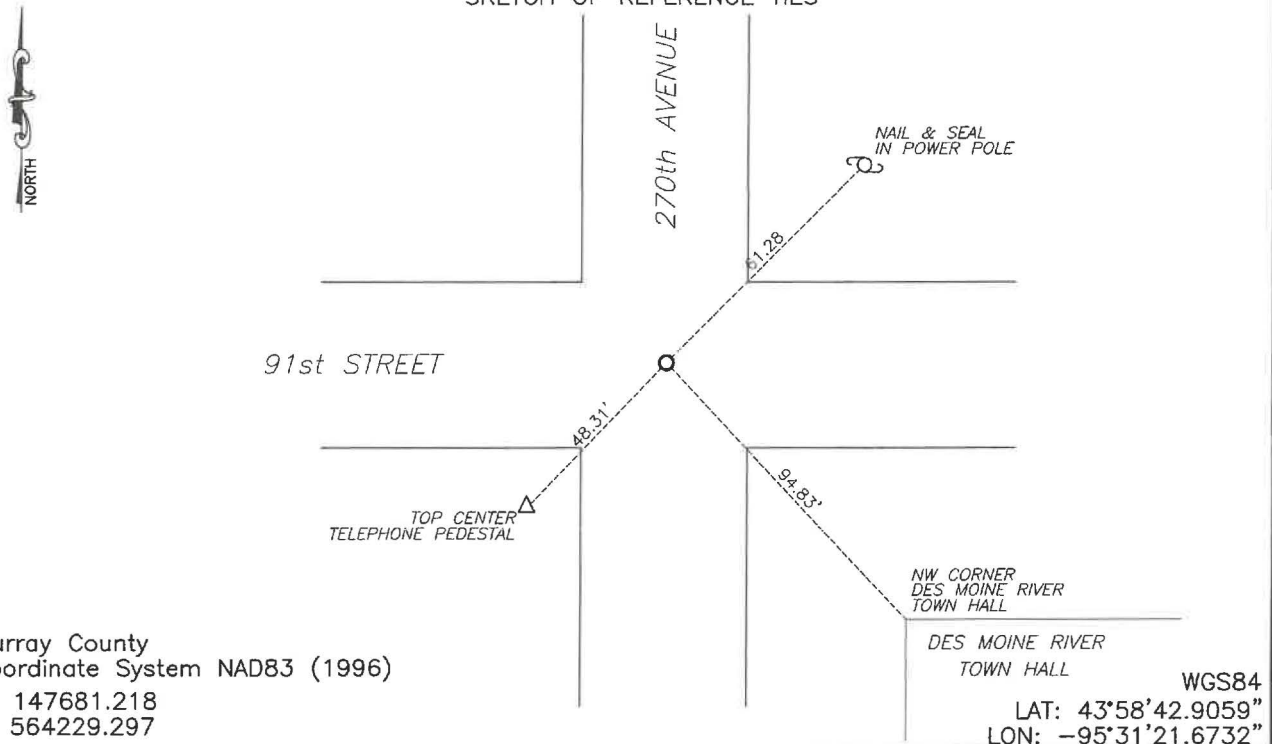
At the corner location shown on the sketch:

☒ On 8/12/2024 found a concrete monument
DATE

☒ left monument as found, ☐ lowered monument, ☐ removed monument (explain)

☒ On 1/29/2025 placed a 5/8" iron with seal #43844 over top of the concrete monument
DATE

SKETCH OF REFERENCE TIES



Statement of evidence relative to this corner location is on back of page.

I hereby certify that this document and the data contained herein was prepared by me or under my direct supervision.

Daniel L. Bueltel 3/13/2025
DATE
License No. 43844

MAR 13 2025
Karen Brown
MURRAY COUNTY RECORDER

Statement of Evidence

NORTHEAST CORNER SECTION 21, T106N, R39W OF THE 5th P.M.

In September 1858 W.J. Neely surveyed the east township line.

In July of 1861 J.W. Myers surveyed the north, south, and west township lines.

In August of 1861 Wellman & Smoot subdivided the township.

County records from 1940 note a concrete monument at the corner.

On November 16, 2007 Perry Zieske, LS #23008, located a concrete monument and placed an iron with seal #23008 above the monument.

On August 12, 2024 Bueltel-Moseng Land Surveying dug and located an 8" concrete monument and placed a $\frac{5}{8}$ " iron on the north side of the monument.

Returned on January 29, 2025 and placed a $\frac{5}{8}$ " iron with seal #43844 over top of the concrete monument.